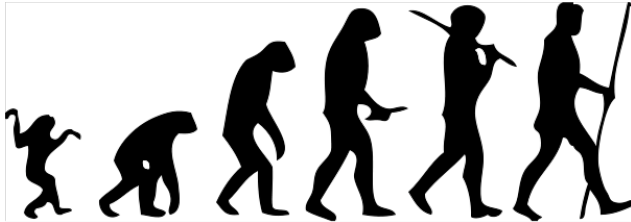


# The Origin and Evolution of Humans

Historical Background



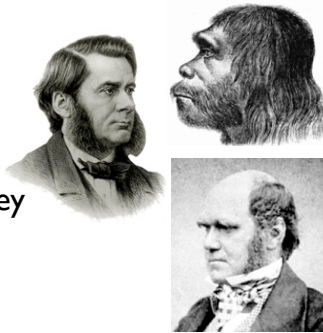
## Paleoanthropology

- The study of human origins and evolution through fossils, artifacts, and DNA.
- Combines paleontology with physical anthropology
- Origins in the 1800's

Neanderthal Man

Thomas Henry Huxley

Charles Darwin



## Neanderthal Man

- First fossils recognized as a different human species.
- 1829: Neanderthal skulls were discovered in Belgium.
- 1848: Neanderthal skull found in Gibraltar. Called "an ancient human" at the time.
- 1856: Johann Karl Fülrott first recognized the fossil called "Neanderthal man", discovered in Neanderthal, a valley in what is now North Rhine-Westphalia, Germany





## Asia - cradle of humanity?

- Few people were ready to accept Africa as the cradle of humanity. Europe was not yielding old enough remains. The American peoples were too primitive.
- The hunt for early humans shifted to Asia in the early 20th century.
- Roy Chapman Andrews led a series of expeditions to China and Mongolia in the 1920s. His goal was to find human fossils. He found none. Fortunately, he did find dinosaur fossils and dinosaur eggs, so people forgot about the real reason for the expeditions.



## Peking Man

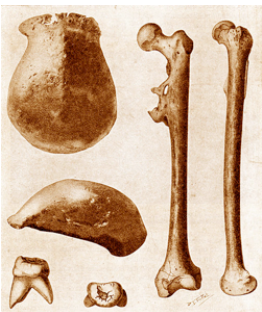
- Discovery of human-like (hominin) teeth around Zhoukoudian (near Beijing) in the early 20th century.
- Excavations up to the outbreak of war in 1937 led to the discovery of multiple partial remains of *Sinanthropus pekinensis* - Peking Man.



- Unfortunately, all of the fossils of Peking Man, except for three teeth, were lost during the Japanese invasion of China. They were packaged up to be shipped to the U.S. but never arrived. To this day their location remains a mystery.

## Java Man

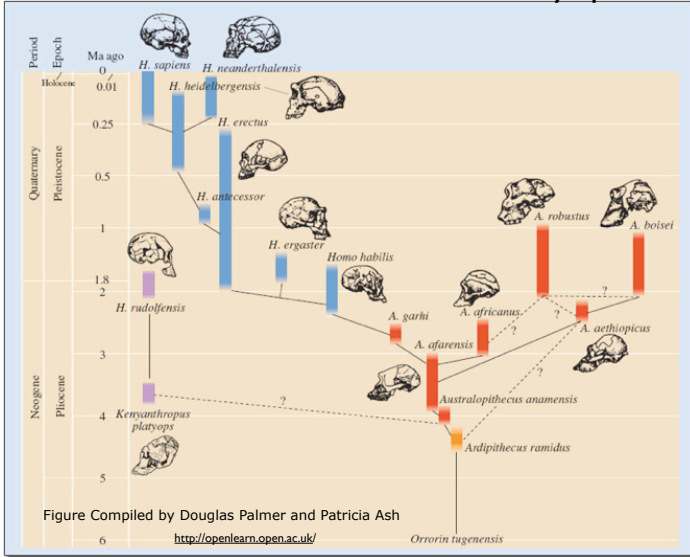
- 1895-1897 Eugene Dubois discovers hominin remains on the island of Java in Indonesia.
- He describes and names the fossils *Pithecanthropus erectus* (erect-walking ape-man).



- Later, both Java Man and Peking Man were placed under the genus *Homo* and are now both considered by most paleoanthropologists to be subspecies of *Homo erectus*.



# Current view of human evolution - many species!




---



---



---



---



---



---



---



---



---



---